



AN EXPANSION FOR MIDDLE + HIGH SCHOOL A SECURE ENTRY & SAFETY PROCEDURE

REVEAL. REFLECT.
VISUALIZE THE FUTURE.

POSITION & SCOPE

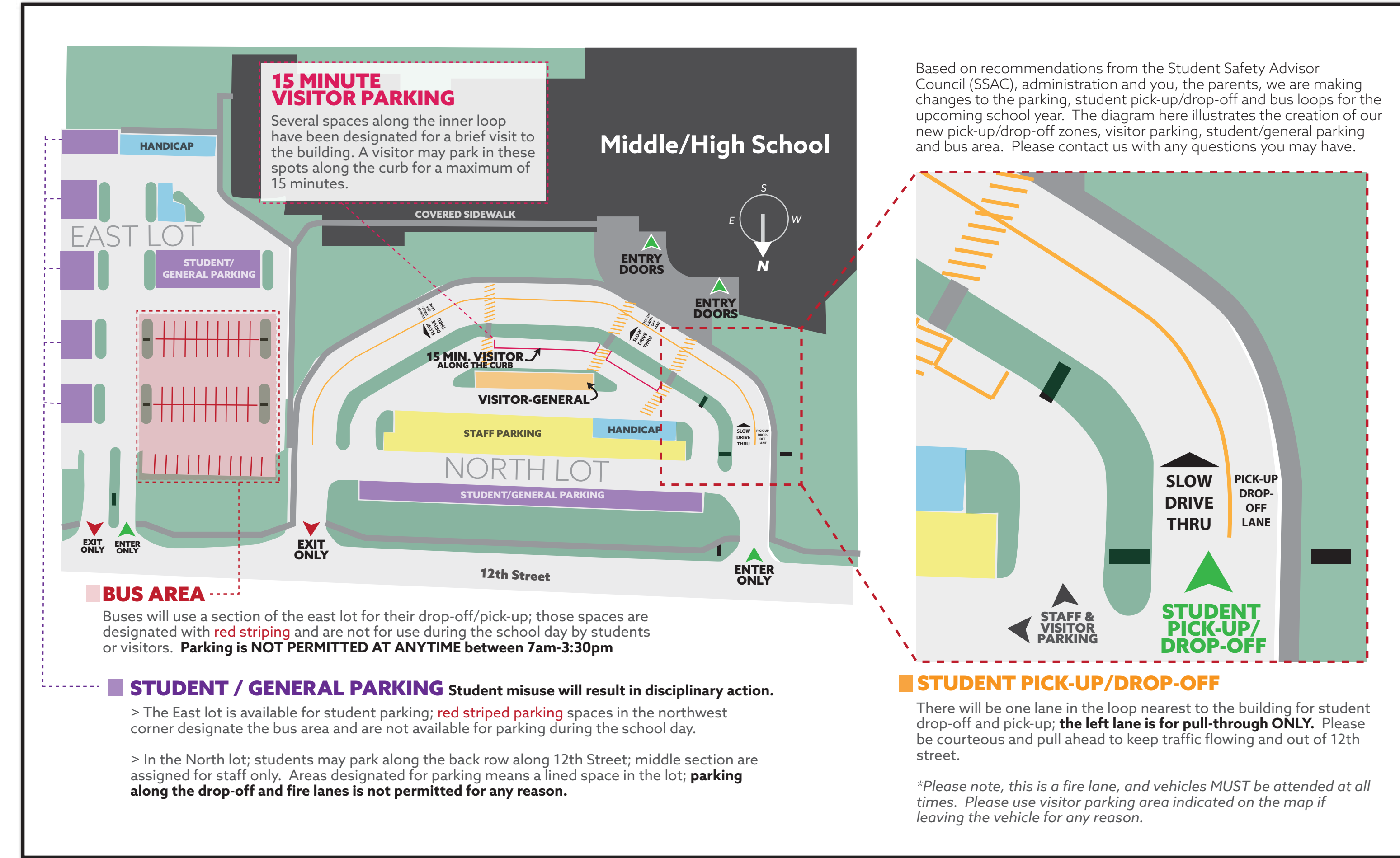
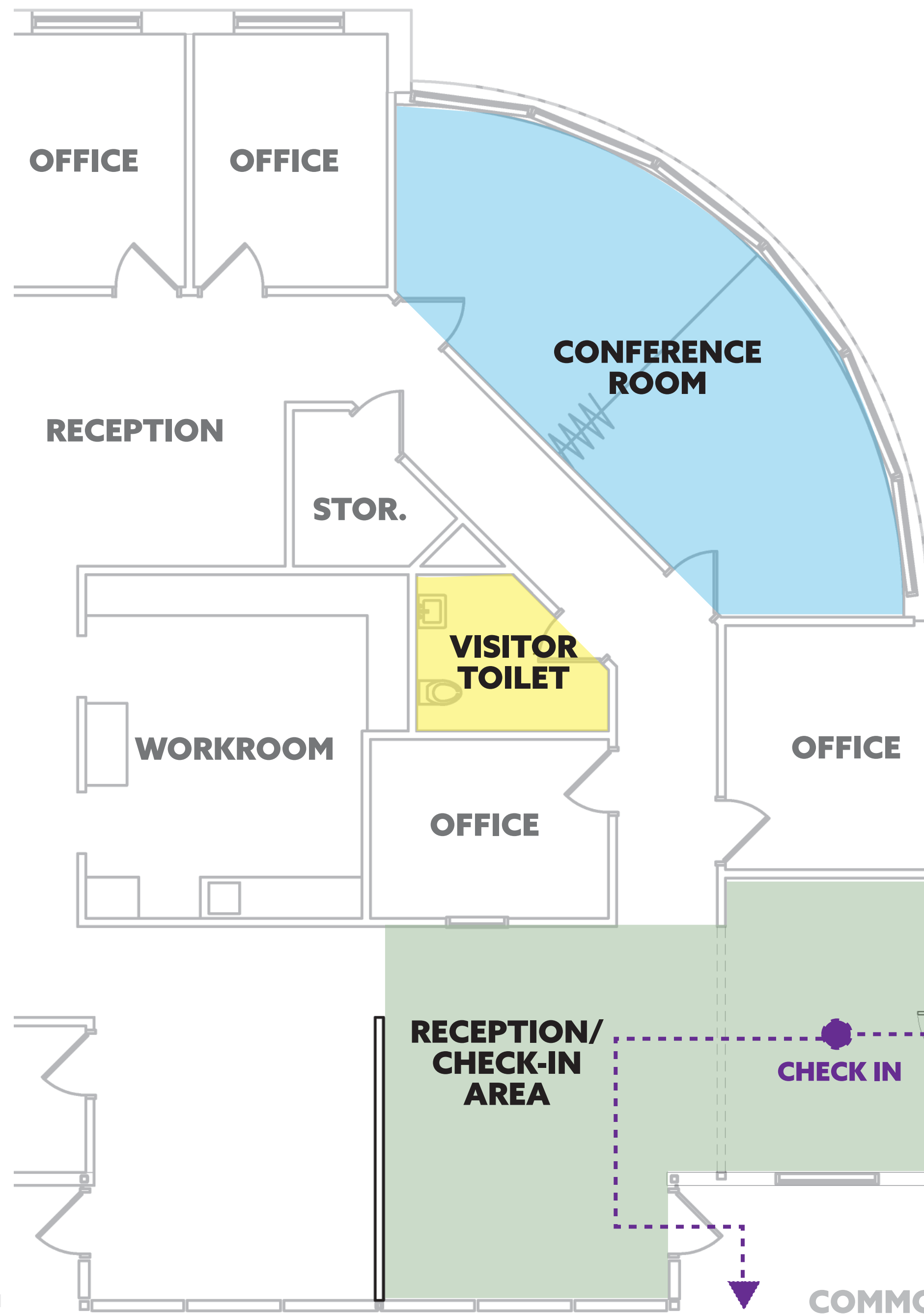
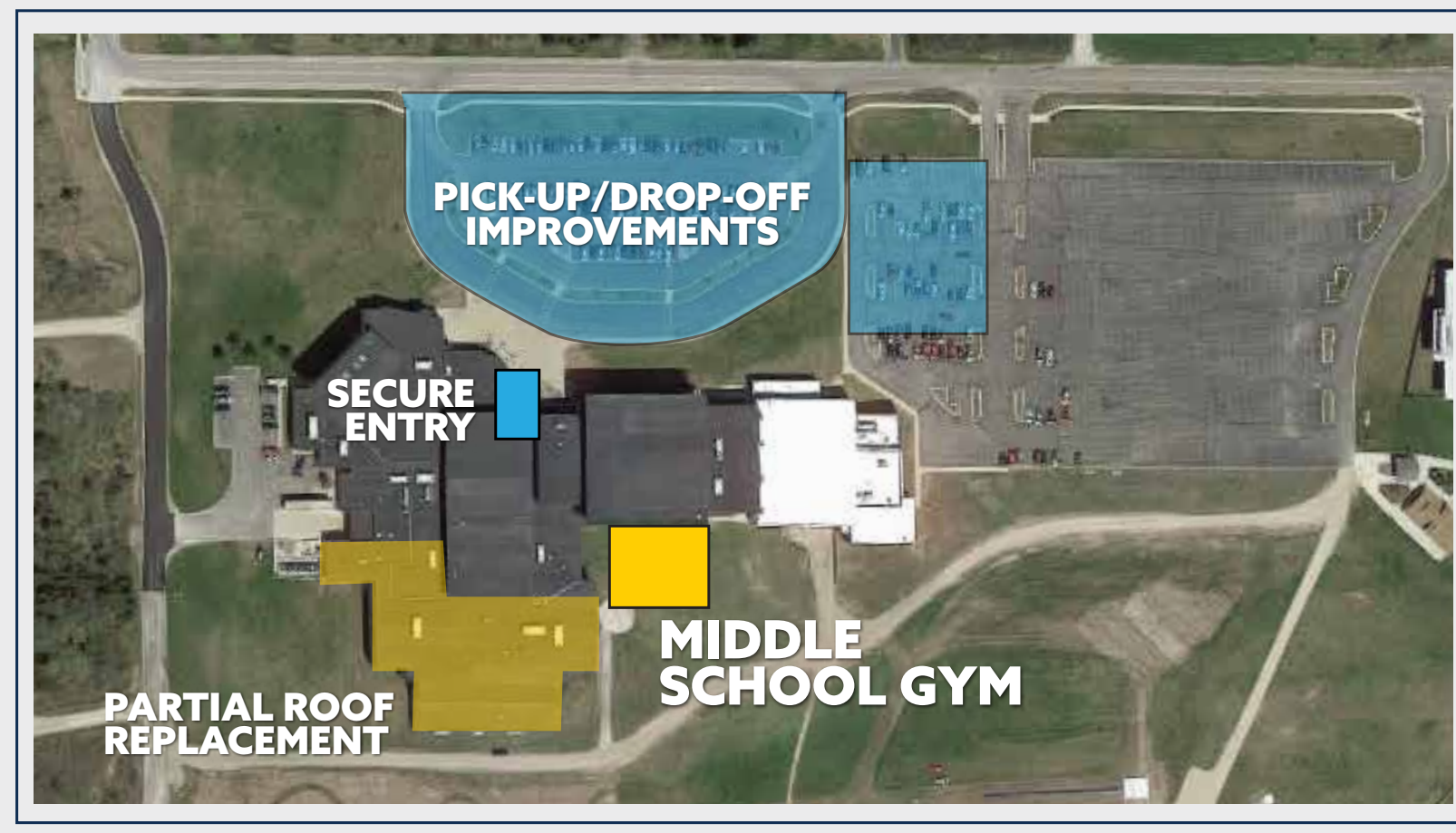
MMHS SECURE ENTRY: Through the work being done by the Student Safety Advisory Committee (SSAC) along with the facility needs assessment, it was identified that a high priority project for the MMHS building was to better secure the entry and secure check-in procedures for all incoming visitors during the school day.

The District, through general fund balance, is beginning this project this Fall as part of their 20 year facility update and vision plan. This plan includes the reconfiguration of the entry to allow for secure visitor screening prior to entry into the primary building.

In addition, security procedures and additional lock down mechanisms are being discussed to secure the various wings of the MMHS building in the event of a lock down requirement.

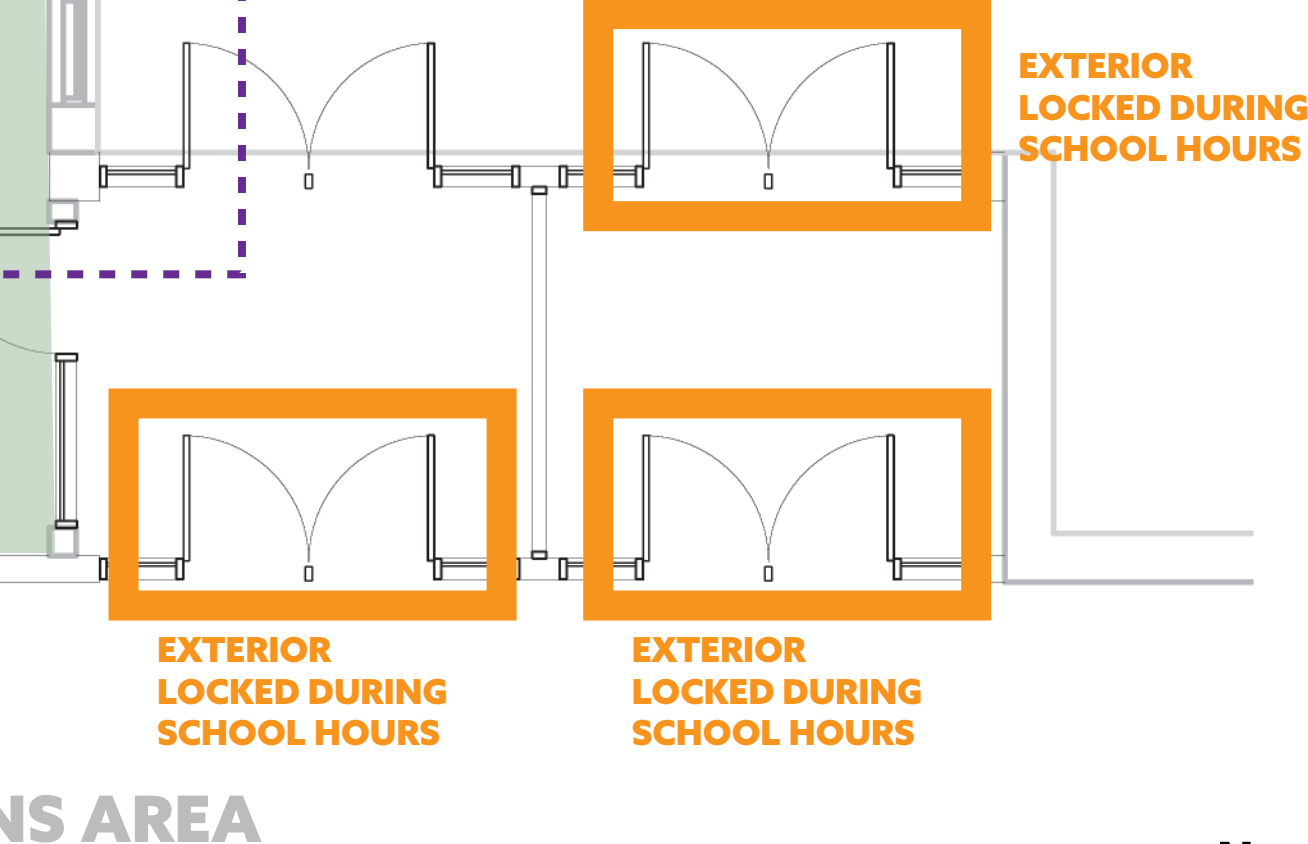
PICK-UP/DROP-OFF IMPROVEMENTS: In addition to the secure entry, new for the Fall 2019 school year, the pick-up and drop-off area was reconfigured with new signage, striping and procedures. It was identified by the facility assessment along with SSAC and parent/public survey's as part of the MAPS 2020 visioning sessions that the pick-up and drop off area was lacking in safety, efficiency and convenience.

The district worked with local professionals to design a new circulation plan that will allow for safe pick-up and drop-off areas for incoming and outgoing students.



PICK-UP/DROP-OFF PLAN

SECURE ENTRY AREA & VISITOR CHECK-IN



SECURE ENTRY PLAN